



**dab** Data Products

# dab Data Products – Material Documents

Customer Brochure

**dab Data Product Material Documents** helps organizations gain control over their goods movements by transforming material document data into actionable business intelligence. **Our solution consolidates inventory transactions, movement types, and cost allocations into a structured, analytics-ready format**—empowering warehouse managers, logistics directors, and controllers to make informed decisions without technical complexity.

Organizations that optimize their material movement processes unlock significant value: **improved inventory accuracy, faster discrepancy resolution, and better cost control**. Research shows that the average inventory accuracy rate for businesses is only 83%, with world-class organizations targeting 95% accuracy.<sup>1</sup> Meanwhile, **poor data quality costs organizations an average of \$12.9 million annually<sup>2</sup>, with inventory errors directly affecting cost of goods sold and financial statement accuracy**.

Manual goods movement tracking creates persistent challenges: inventory errors can overstate or understate COGS, affecting gross profit and net income across multiple accounting periods.<sup>3</sup> Common problems include incorrect quantity counts, transfer imbalances

between locations, and timing errors in goods receipts. Modern material document analytics help you understand movement patterns, identify process bottlenecks, and strengthen inventory controls.

**Our solution addresses these challenges by providing a unified view of material movement data, translating technical SAP codes into business-friendly terms**. This enables you to monitor goods receipts and issues, track transfer activities, verify cost allocations, and identify inventory discrepancies quickly.

**\$12.9 million**

is the average amount an organization loses every year due to poor data quality.

**Designed for warehouse managers, logistics directors, controllers, plant managers, and business analysts**, dab Data Product Material Documents delivers measurable value: improved inventory visibility, reduced posting errors, and enhanced decision-making.

**Getting started is straightforward:** we assess your SAP environment, demonstrate the solution with your data, and implement a tailored plan that fits your needs.

<sup>1</sup> <https://www.netsuite.com/portal/resource/articles/inventory-management/inventory-discrepancies.shtml>

<sup>2</sup> <https://ftmaintenance.com/cmms/cmms-data-quality/>

<sup>3</sup> <https://www.accountingtools.com/articles/types-of-inventory-errors>

# Table of Contents

- Overview dab Data Product Material Documents..... 4
- Material Document Header (MKPF)..... 4
- Material Document Segment (MSEG) .....5
- Customization (T-Tables) .....5
- Analytical Capabilities (dab AnalyticSuite) .....6
- Use Cases.....7
- Summary and next Steps .....9

## Overview dab Data Product Material Documents

This Data Product **unifies your goods movement landscape across company codes, plants, and storage locations**. It removes data silos by standardizing your SAP material document structures into a consistent, analytics-ready model that business users can easily understand.

It provides visibility into inventory transactions and movement patterns, with relevant information accessible in one place. **The solution harmonizes definitions for movement types, document types, and reason codes, creating a common language for goods movements across the organization**. It also offers consistent, plant-aware reporting that supports inventory accuracy, accelerates discrepancy resolution, and improves operational control.

The solution is structured around the following core components, which together support material movement analysis:

- **Material Document Header (MKPF)** captures who created the document, when it was posted, and which transaction type was used.
- 

- **Material Document Segment (MSEG)** provides line-item details including materials, quantities, movement types, and cost allocations.

- **Customization (T-Tables)** provides business meanings behind movement types, document types, reason codes, and organizational structures.

By linking these components into a unified model, you gain visibility into goods movements that helps you improve inventory accuracy, reduce discrepancies, strengthen cost control, and maintain better operational oversight—while reducing manual effort and improving compliance.

## Material Document Header (MKPF)

Track document creation, posting dates, and transaction types to understand who performed which movements and when. MKPF captures the user who created the document, posting dates, transaction codes, and reference numbers—enabling you to **trace transactions back to their source, verify internal controls, and identify unusual posting patterns**.

Track who created the document, when it was posted, which transaction code was used, and key references. This information **provides**

**traceability for audits, supports internal controls, and enables analysis of posting patterns by user or department.**

## Material Document Segment (MSEG)

This section **provides detailed, line-level information about each item within your material documents.** It shows what was moved – including material numbers, descriptions, and quantities – along with movement types, plants, storage locations, and batch information. The data also captures financial values in both local and reporting currencies.

Understand what was moved (materials, quantities, batches), where it went (plants, storage locations), and why (movement types, reason codes). Links to purchase orders, sales orders, and production orders provide context for each transaction, supporting root cause analysis and cost allocation.

## Customization (T-Tables)

This section **provides the business context behind technical SAP codes by translating them into meaningful descriptions.** It includes movement type descriptions, document type names, reason code explanations, special stock indicator texts, and

organizational unit names such as plants, storage locations, and company codes.

Translate movement types, document types, and reason codes into plain business language. Reports become immediately understandable, supporting self-service analytics without SAP expertise.

This translation layer is essential for self-service analytics, enabling warehouse managers, logistics coordinators, and finance teams to explore movement data without requiring SAP expertise. It supports cross-functional collaboration, improves data accessibility, and ensures that insights are actionable by the people who need them most.

## Analytical Capabilities (dab AnalyticSuite)

The dab Data Product Material Documents integrates seamlessly with our comprehensive [dab AnalyticSuite](#) to deliver immediate, actionable insights across five key dimensions:

**1 Movement Volume & Value Analysis:** Monitor total goods movement volumes and values across plants, storage locations, and movement types. Track trends over time, identify seasonal patterns, and understand which materials and locations drive the highest transaction volumes.

**2 Consumption & Goods Issue Analysis:** Monitor goods issue patterns by cost center, production order, and material. Understand consumption patterns, identify high-usage materials, and track material flows to support production planning and inventory optimization.

**3 Inventory Adjustment Monitoring:** Track inventory adjustments, scrap postings, and correction movements. Identify patterns that may indicate process issues, quantify the financial impact of adjustments, and support

continuous improvement initiatives.

**4 User Activity & Compliance:** Monitor posting activities by user and department. Track transaction timing patterns, identify unusual activities, and support audit requirements with detailed user-level movement histories.

**5 Stock Transfer Analytics:** Analyze transfer movements between plants and storage locations. Understand material flow patterns, identify transfer bottlenecks, and optimize distribution network efficiency.

**Customization & Integration Capabilities:** Our AnalyticSuite adapts to your specific business requirements, integrating seamlessly with ERP systems, warehouse management platforms, and reporting tools such as Power BI and Excel. Pre-built dashboards provide instant visibility, while custom analytics can be configured to address unique organizational needs.

The combination of standardized material document data with advanced analytics capabilities enables you to transform inventory management from a transactional function into a strategic operations platform.

## Use Cases



### Inventory Accuracy & Discrepancy Resolution

**Challenge:** Inventory discrepancies cause financial statement errors, disrupt operations, and create costly stockouts or excess inventory.

#### Questions answered:

- Which materials show the highest frequency of adjustment postings?
- What is the total value of inventory adjustments by plant and period?
- Which storage locations have recurring discrepancy patterns?

#### Use Case #1

A manufacturing company analyzed adjustment movements across six plants and found 65% of discrepancies originated from two storage locations with inadequate receiving procedures. Targeted process improvements increased inventory accuracy from 84% to 96% within four months.



### Consumption Pattern Analysis & Inventory Optimization

**Challenge:** Without understanding consumption patterns, organizations carry excess safety stock or face unexpected shortages.

#### Questions answered:

- Which materials have the highest consumption volumes and frequencies?
- What are consumption patterns by cost center, production order, or project?
- How do consumption volumes vary by time period or season?

#### Use Case #2

A manufacturing company analyzed goods issue patterns across 4,500 materials and identified 200 high-consumption items representing 70% of total volume. By establishing dedicated picking zones for these materials, they reduced stockouts by 45% and decreased inventory carrying costs by €650K.



## Stock Transfer Optimization

**Challenge:** Excessive inter-plant transfers increase transit inventory, logistics costs, and material availability issues.

### Questions answered:

- What is the volume and value of stock transfers between plants?
- Which materials are transferred most frequently, and why?
- Are there transfer patterns that suggest planning or stocking issues?

### Use Case #3

An automotive supplier found that **20% of transfers were emergency movements covering planning gaps**. By adjusting safety stock levels at receiving plants, they **reduced emergency transfers by 60% and cut logistics costs by €180K annually**.



## Process Efficiency & User Activity

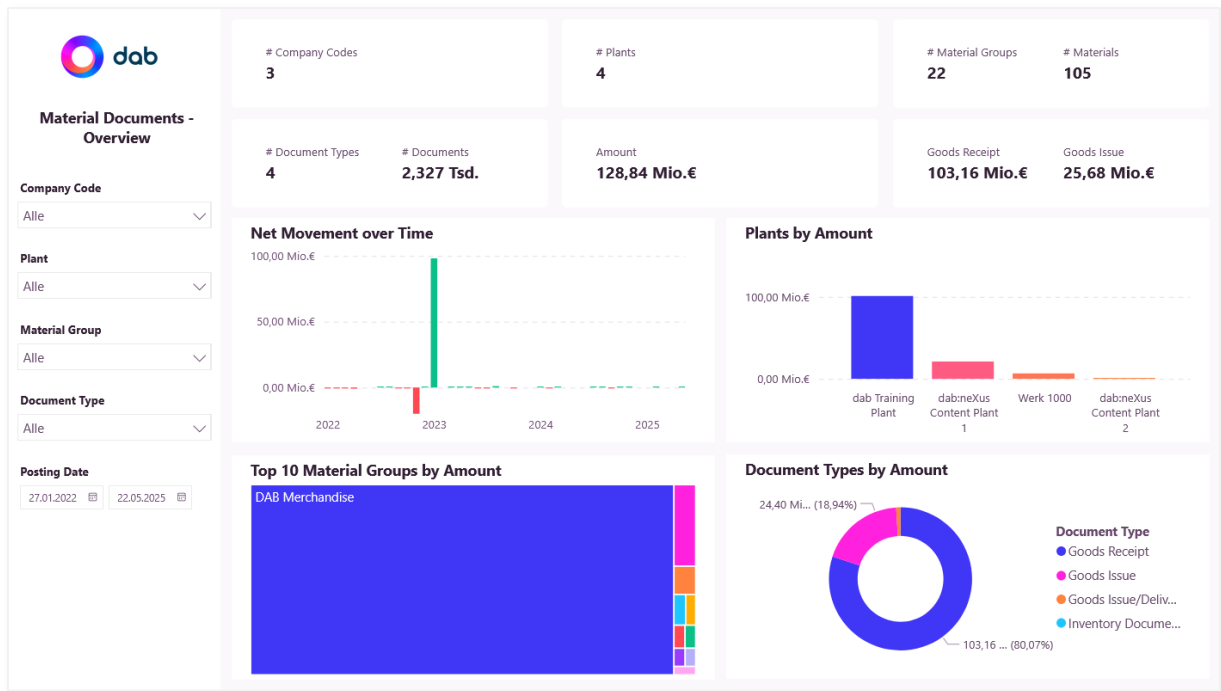
**Challenge:** Posting errors and inefficient processes create extra work, delay reporting, and require costly corrections.

### Questions answered:

- Which users or departments post the highest volume of material documents?
- How many documents require cancellation or correction movements?
- Which transaction codes or movement types are used most frequently?

### Use Case #4

A chemical company discovered new employees had **3x higher error rates during their first 90 days**. Enhanced onboarding training and a buddy system **reduced posting errors by 45% and accelerated time-to-productivity**.



Power BI Report "Data Product Material Documents" Page "Overview" displaying key metrics along with visual breakdowns of relevant information.

## Summary and next Steps

This Data Product transforms your material document data into clear, actionable information. It provides visibility across the entire goods movement process by connecting document headers, line items, business partner information, and organizational details into a unified view.

The solution helps you monitor inventory movements, optimize logistics processes, and strengthen controls while presenting information in business-friendly language that is accessible to users without technical expertise.



## Key Benefits include:

- Transparency across goods movements, from receipt to issue to transfer
- Multi-dimensional analysis of movement volumes, values, and patterns
- Clear visibility into vendor, customer, and intercompany relationships
- Improved control over posting accuracy, inventory adjustments, and user activities
- Better decision-making based on accurate, harmonized movement data

**Ready to transform your inventory operations?** Our implementation approach makes it easy to get started:

**1 Assessment:** We evaluate your SAP environment and material documents requirements

---

**2 Demonstration:** See the solution in action with your actual data

---

**3 Implementation:** We configure a tailored solution in your environment

---

**4 Activation:** Gain immediate access to 10+ Material Documents analyses and an interactive Power BI report

**Contact us today** to discover how **dab Data Product Material Documents** can help you achieve greater inventory visibility, process optimization, and strategic value from your goods movement operations.

**Contact Information:**

✉ [sales@dab-gmbh.de](mailto:sales@dab-gmbh.de)

🌐 [www.dab-europe.com](http://www.dab-europe.com)