



*Taking a step beyond:*  
**Continuous  
monitoring, predictive  
analytics and machine  
learning**

Zürich, 31. Oktober 2018  
Johannes Schwele (ACL)



CHANGING DATA INTO KNOWLEDGE

**Johannes Schwele**  
johannes\_schwele@acl.com

Account Manager for ACL™ in the  
D-A-CH Region



# Agenda

1. Which areas are covered?

2. What are the current tasks?

3. What's next





1

Which areas  
are covered?



Data  
Access

Server

Perfor-  
mance &  
Visuals

Producing  
results in  
general

CCM is covered

Just make sure  
to use modern  
gear

Cloud-  
ready

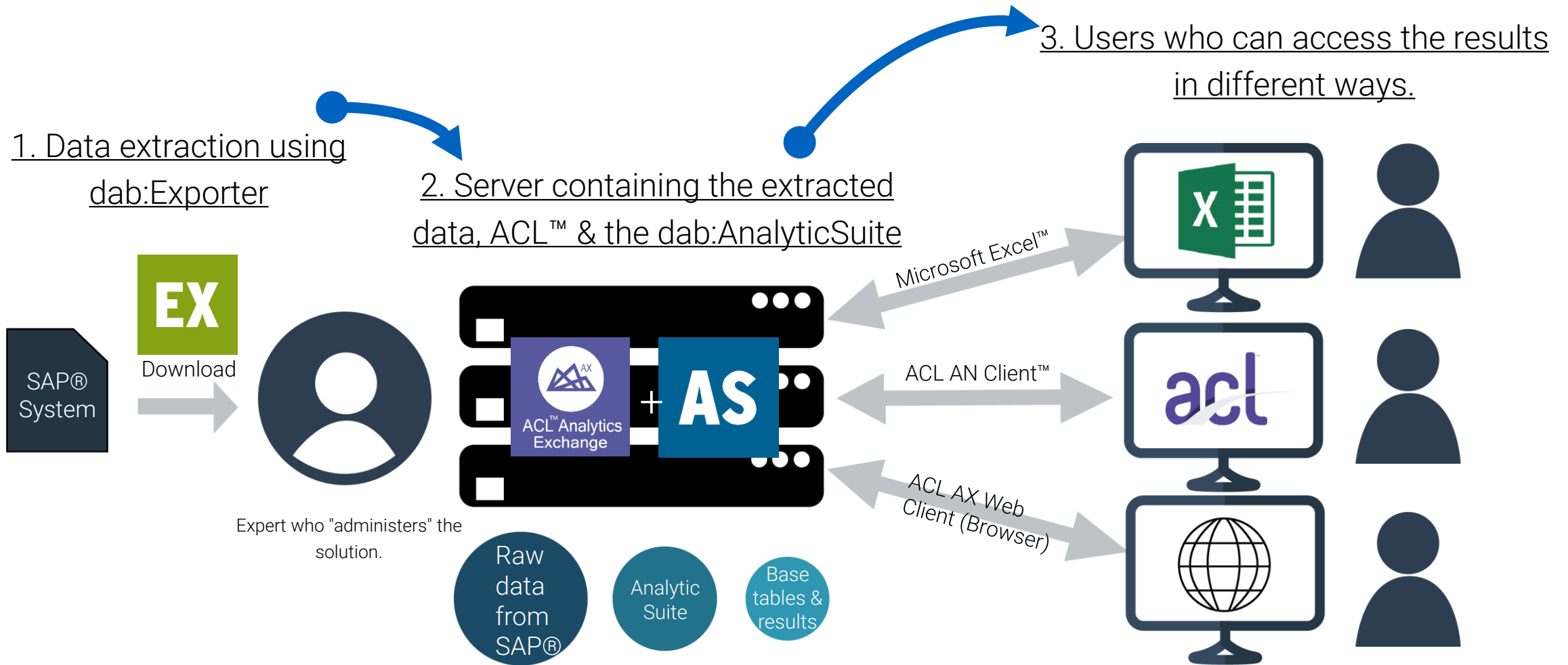
Browser-  
Access

Modern  
data  
connec-  
tors

# CCM is covered



# Architecture





2

What are the  
current tasks?



Risk  
Manage-  
ment

**Risk Assessment,  
KRI**

Audit

**Workpaper & Issue  
Management**

(more than)  
Analytics

Com-  
pliance

ICS

**Assessment, KRI**

**ICS rollout &  
testing**

# Democratize

# From Dashboard to Storyboard

Tell a story  
instead of  
providing tons  
of flat visuals




KPI/KRI

Metrics to  
show trends

Drill-  
through

Reporting,  
Overview

A Newton's cradle with five spheres hanging from a dark frame against a golden-yellow background. The spheres are dark and reflective. The first sphere on the left is in motion, having just struck the others or about to. The text is contained within white circles that overlap the spheres.

Easy-to-use  
workable  
TO-DO List

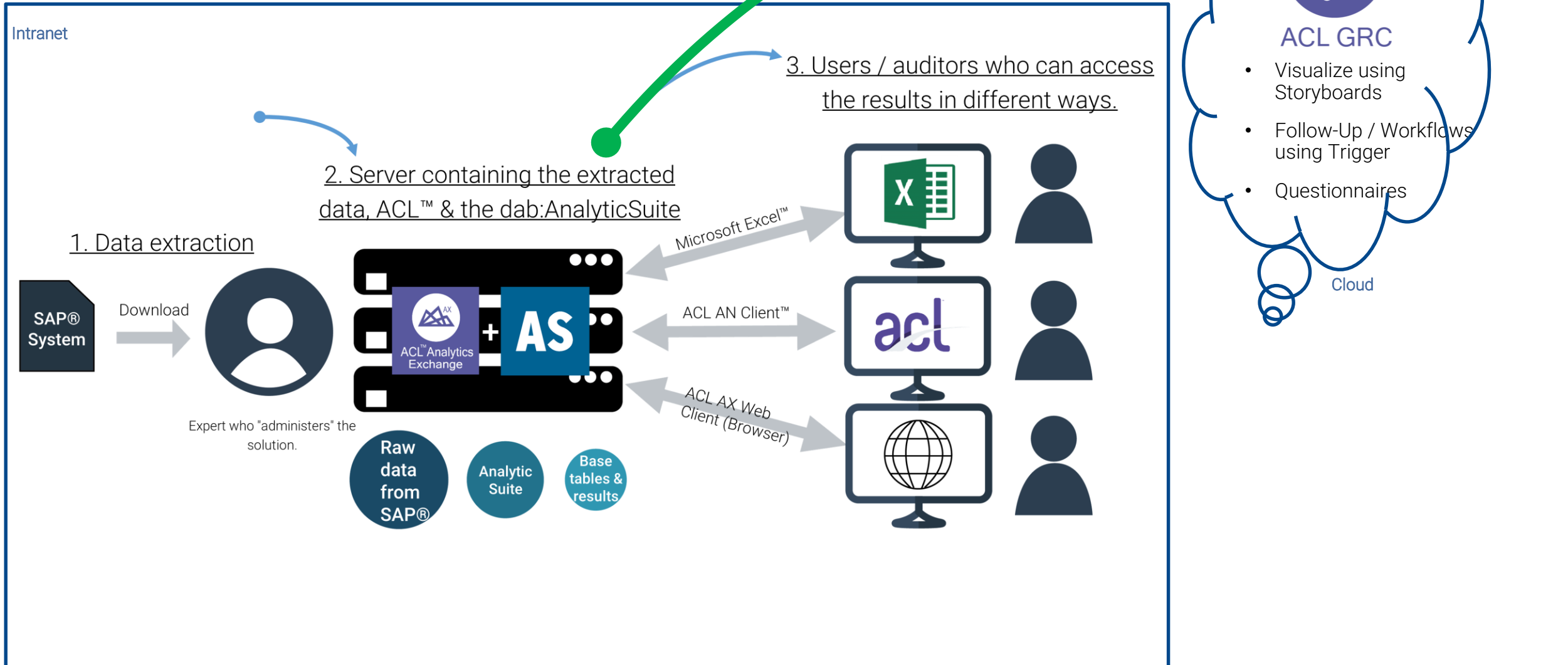
Workable  
and  
traceable...

...  
by being  
communi-  
cative

Being  
proactive  
with  
triggers &  
alerts

# From Insight to Action

# Architecture – Connecting the business with ACL GRC



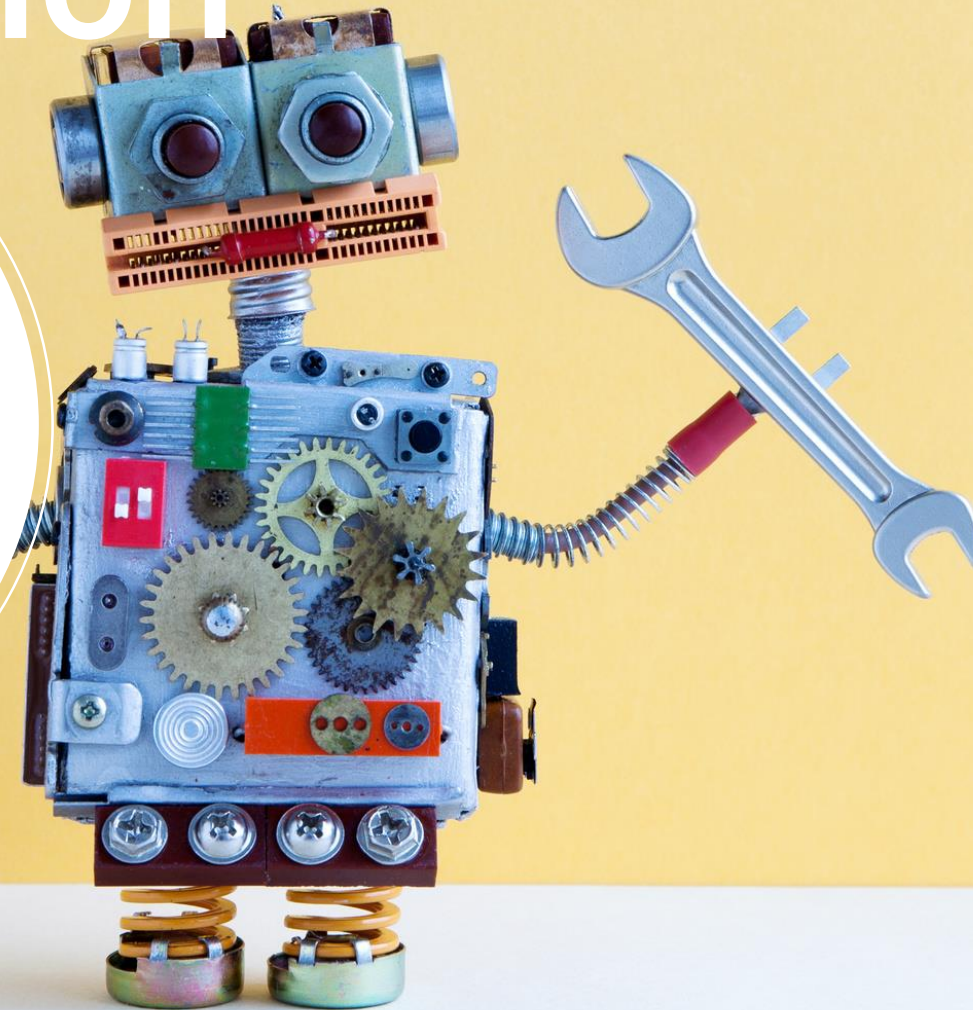
3

What's next?



# Future of Analytics & Automation

ACL Robotics



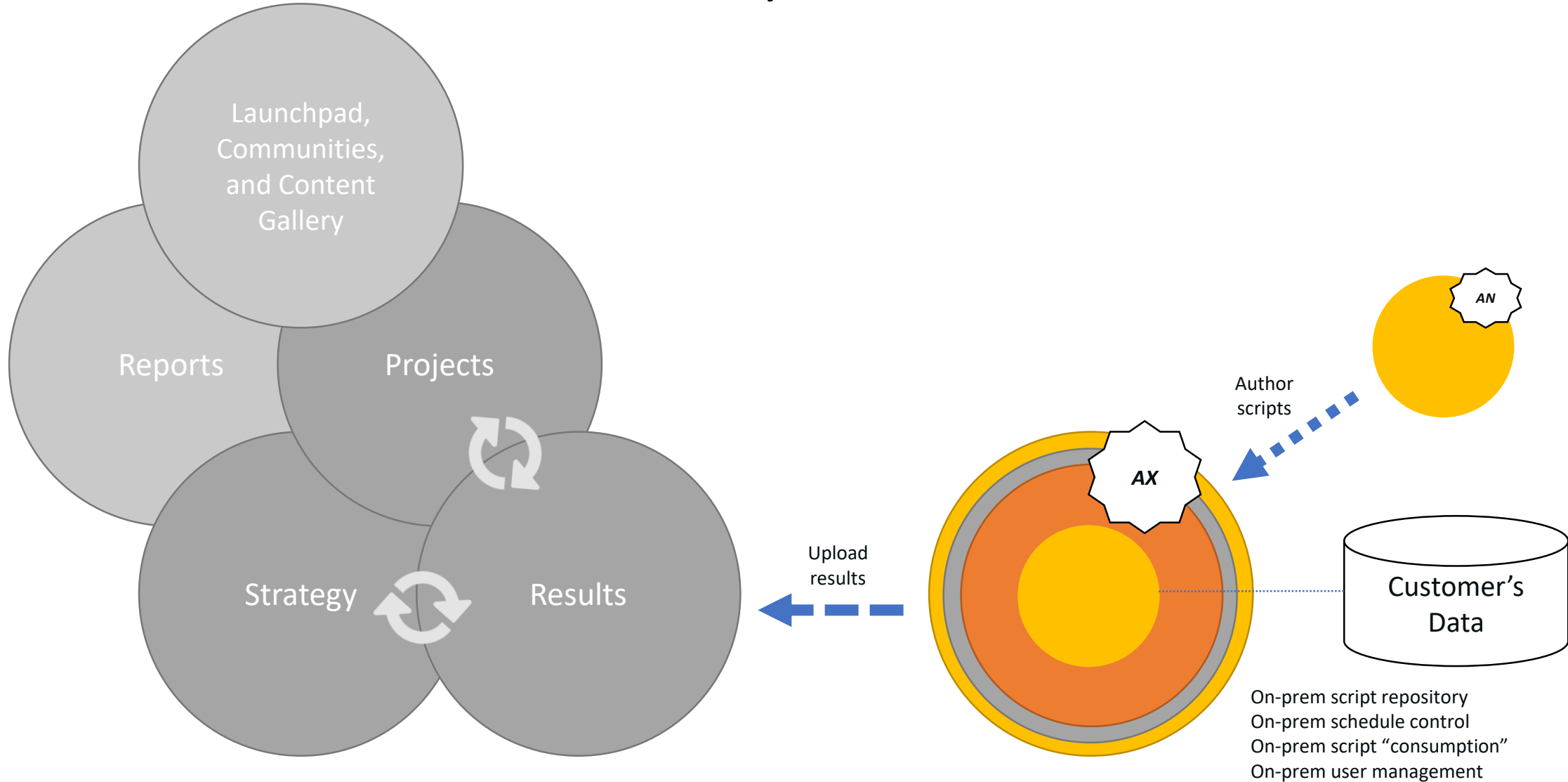
Data Scientist support with R and Python

Machine Learning commands

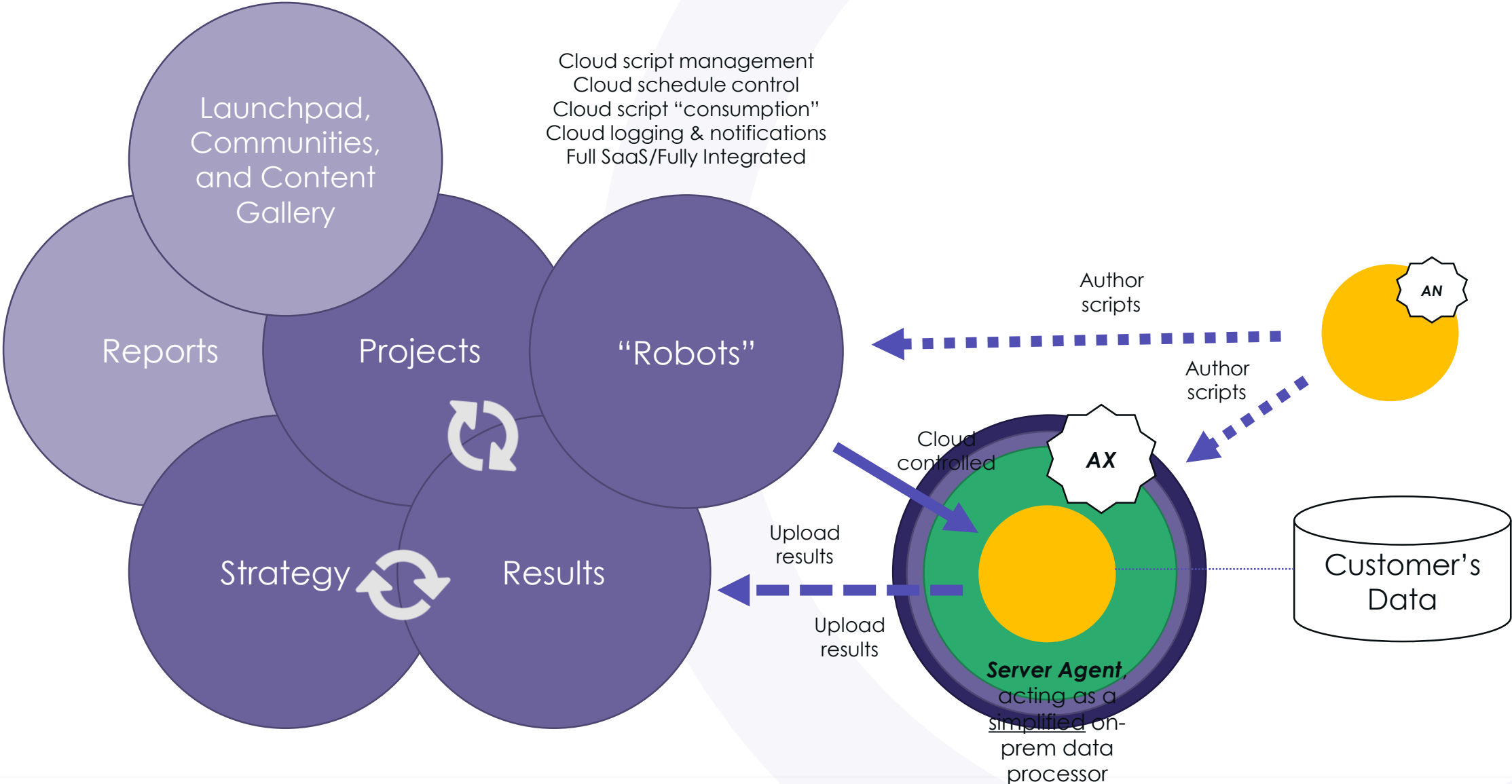
Visualization & Reporting

Robotic Automation

# How ACL works today



# MIDTERM Future – Robots module

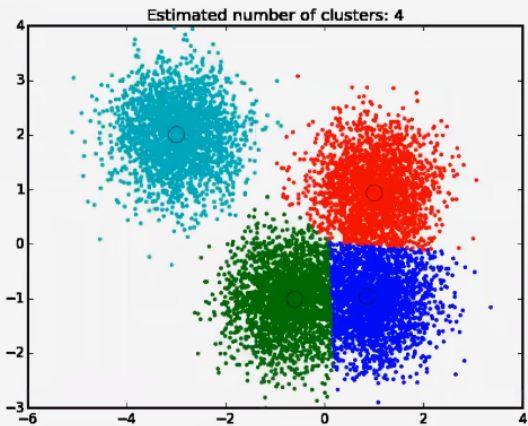


# Machine Learning

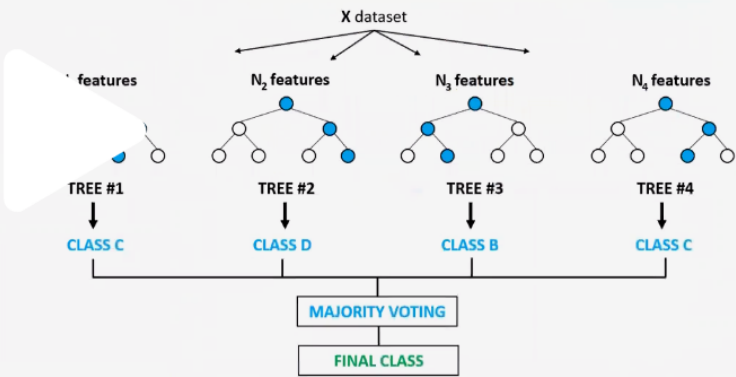


## Machine Learning Commands

K-Means Clustering



Random Forest



Audio Transcript

Chat Messages

Search transcript

always if there any additional functional requests. Just use the use the questionnaire. I've shared

24:52 And and essentially that's it. So really just open session now any Q AMP. A any additional things and it was to bring up any functionality requests that they liked me to go and

25:01 Speak to design about please feel free to share them other than that, what that was all I really had for today.

25:17 No.

25:19 Okay, cool. Well, thanks for your time and I know share the recording.

Resume Transcript Auto-Scroll

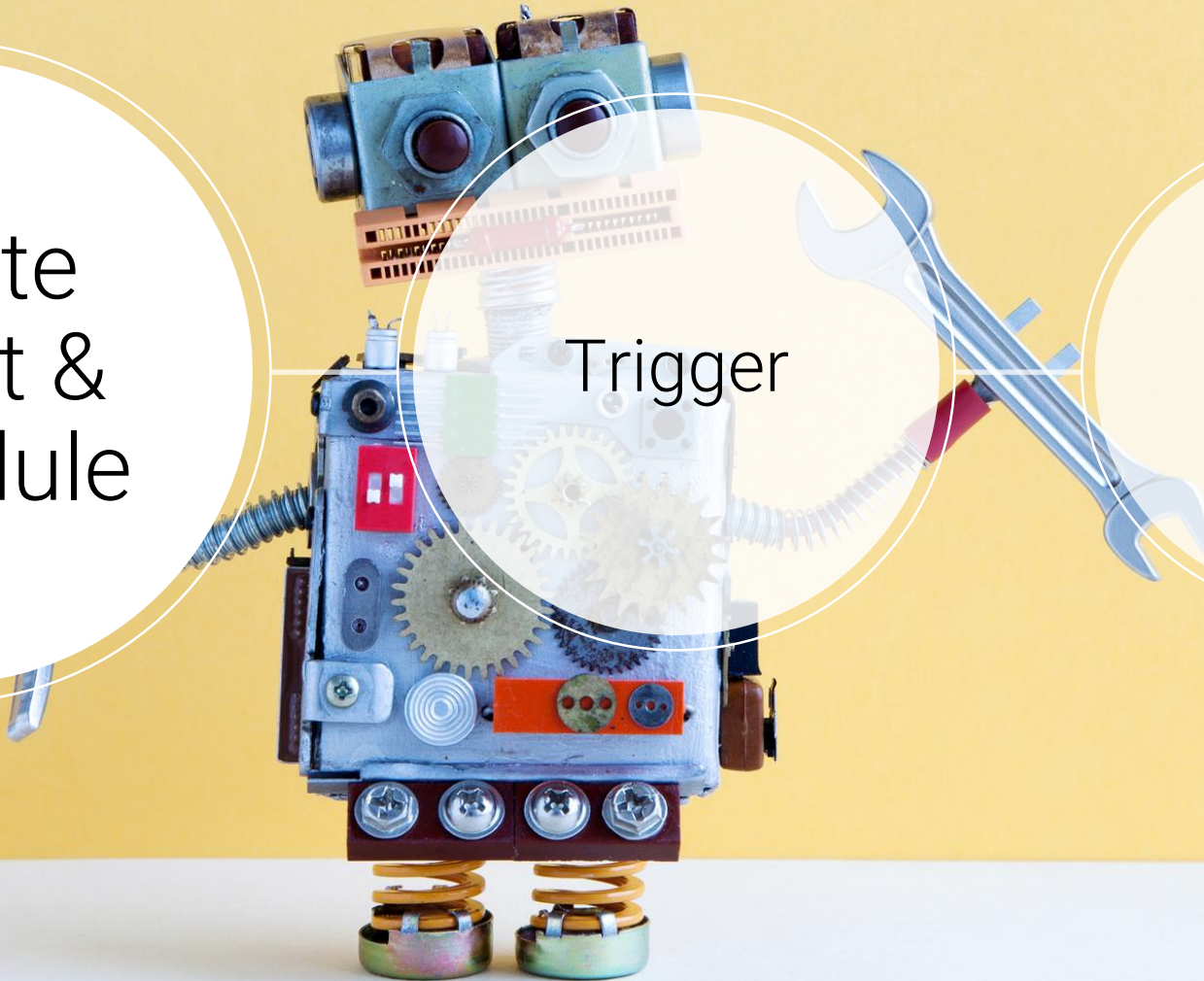
# Short live demo

Create  
Robot &  
Schedule

Trigger

Visualize

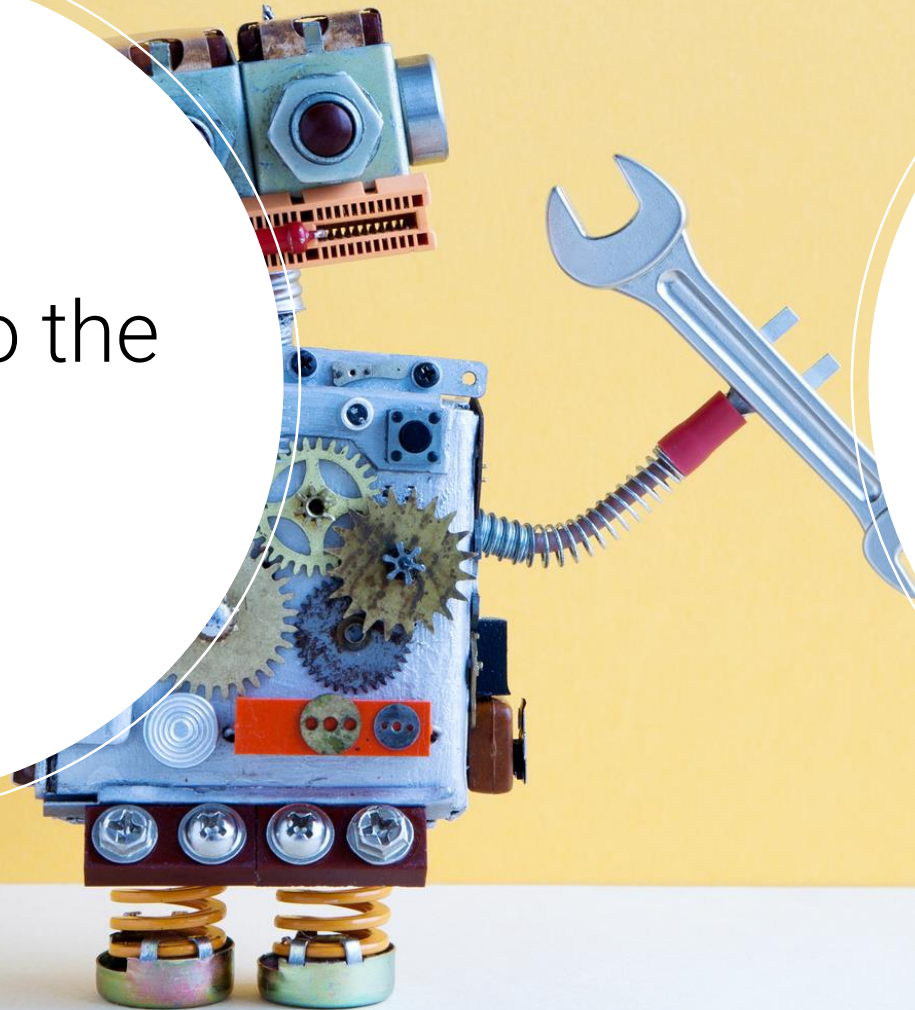
ML



# Business Analyst

Connects to the  
data

Create Robot &  
Schedule to  
create Analytic  
Results



# CFO

Gets informed  
by KRI

Looks at the  
current  
situation  
storyboard



# Auditor or Control Performer



Checks Issue  
Details

Ticks off the  
records  
(can be input  
for Machine  
Learning!)

# Data Scientist


Uses Machine Learning, R&Python in his/her context

Uses Visuals to understand the output, e.g. K-Means cluster





# Summary

A high-angle photograph of a white-water rafting team navigating a turbulent section of a river. The raft is yellow and blue, with three people visible inside, all wearing helmets and life jackets. The water is churning with white foam, and large, dark brown rocks are visible on either side of the rapids. The scene is dynamic and captures the intensity of the sport.

Current status of  
Machine Learning,  
Artificial Intelligence  
& Predictive is  
“beginner level” for  
most of us.

The challenge (that  
ACL is solving) is:  
Making it usable for  
a broader audience.

# Summary

A silhouette of a person with their arms raised in a celebratory gesture, set against a warm, orange-hued sunset background. The sun is positioned behind the person's head, creating a bright lens flare effect.

Going from  
BI and  
Monitoring to  
Augmented  
Analytics...

Give the  
power of  
data  
analytics to  
the  
business...

... by using  
ML and AI  
and Robotic  
Analytic  
Automaticon.

... but do it on  
an  
appropriate  
level.



[WWW.ACL.COM](http://WWW.ACL.COM)

[WWW.DAB-GMBH.DE](http://WWW.DAB-GMBH.DE)

[Johannes\\_Schwele@ACL.COM](mailto:Johannes_Schwele@ACL.COM)

[Stefan.Wenig@dab-gmbh.de](mailto:Stefan.Wenig@dab-gmbh.de)